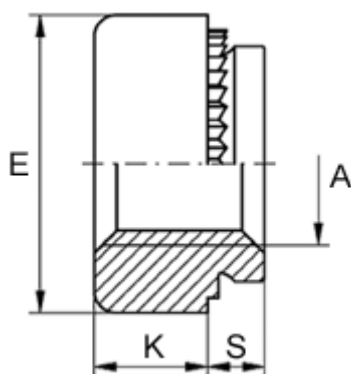


Article number: 12501000100100
Description: KLEE-coil 501 000 100.100
M10 Hardened, zinc-pl./chr. yellow

Measures



Female thread A	= M10
Height K	= 7.0
Max recess height	= 2.0
Min distance to edge	= 5.0
Outer diameter E	= 15.0
Plate thickness	= 2.4 to 3.2
Recommended bore diameter +0.05	= 13.00